

Prospect Estate

Proposed proactive long-term tree management project

Andy Ford

Parks and Open Spaces Manager

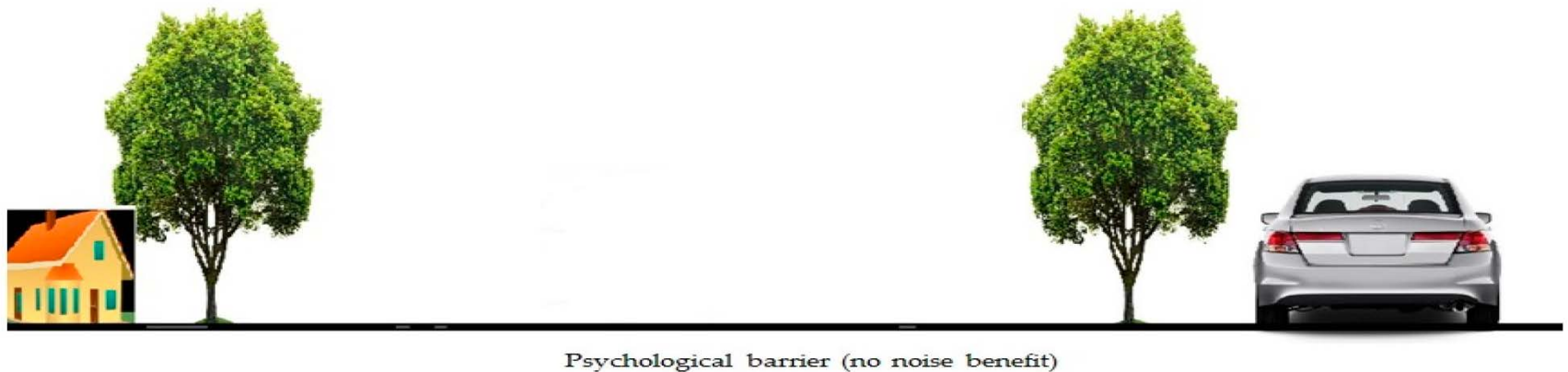
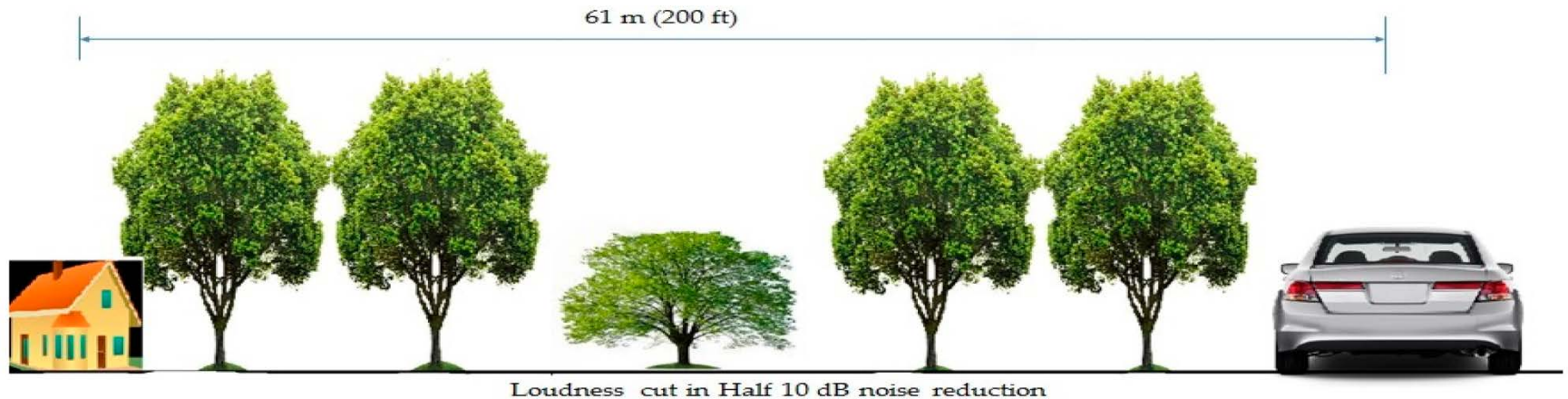
Value of trees

- Visual amenity



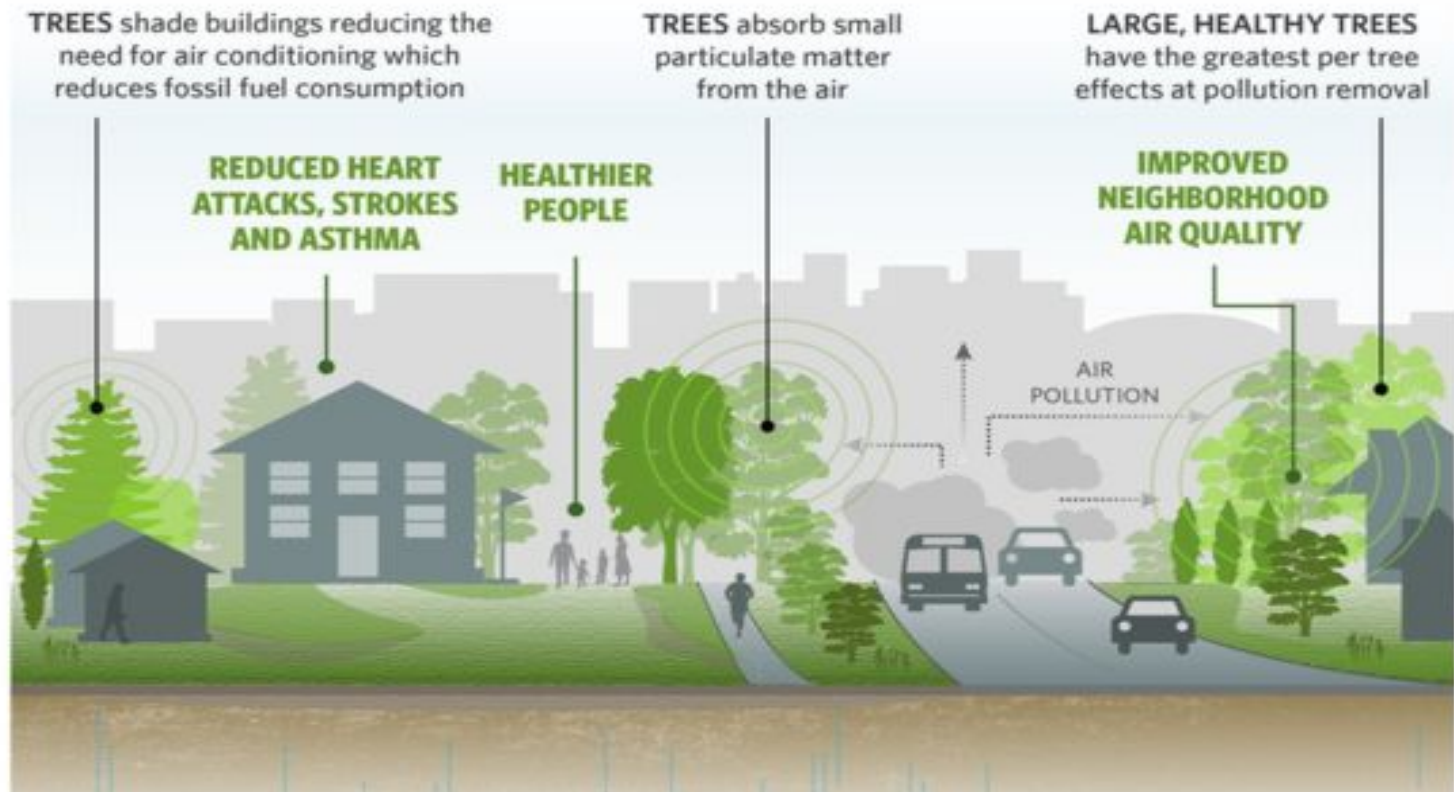
Value of trees

- Noise abatement



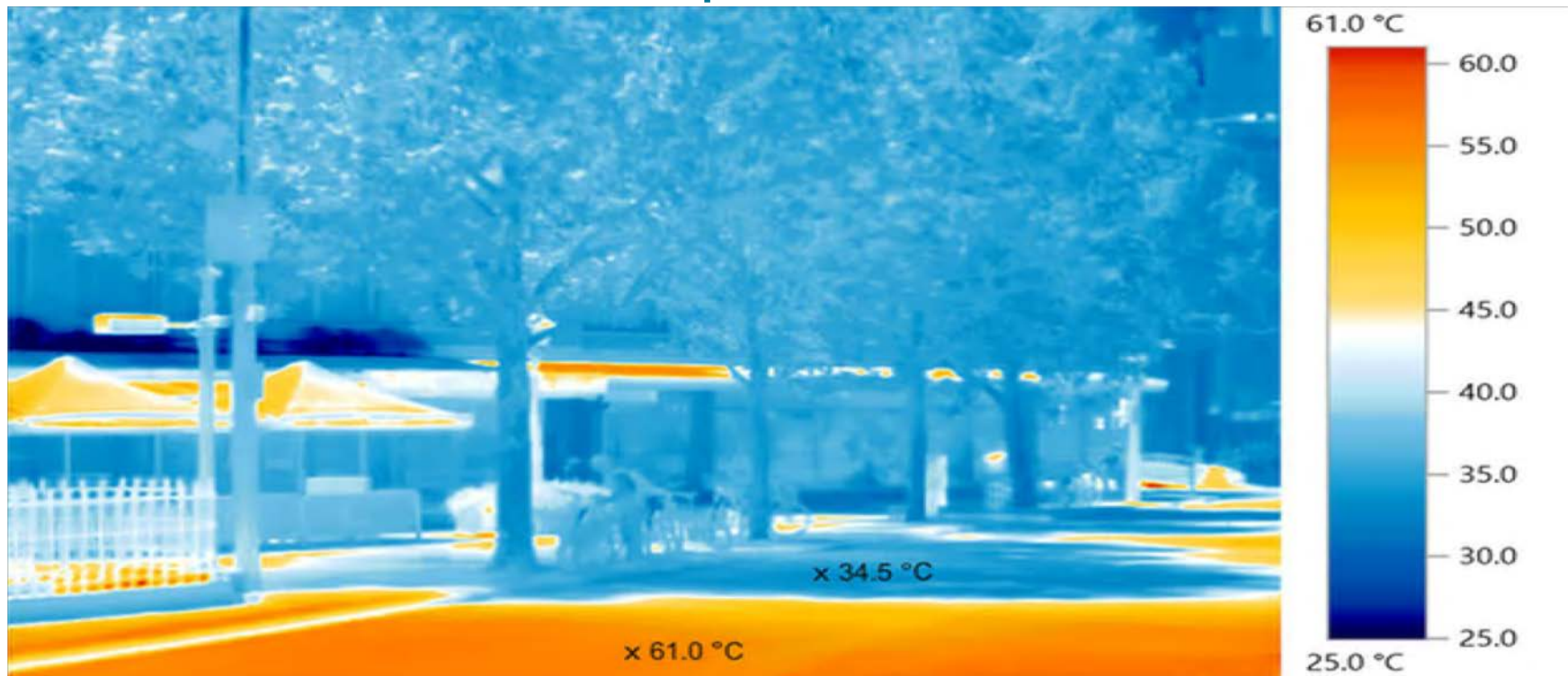
Value of trees

- Particulate trapping



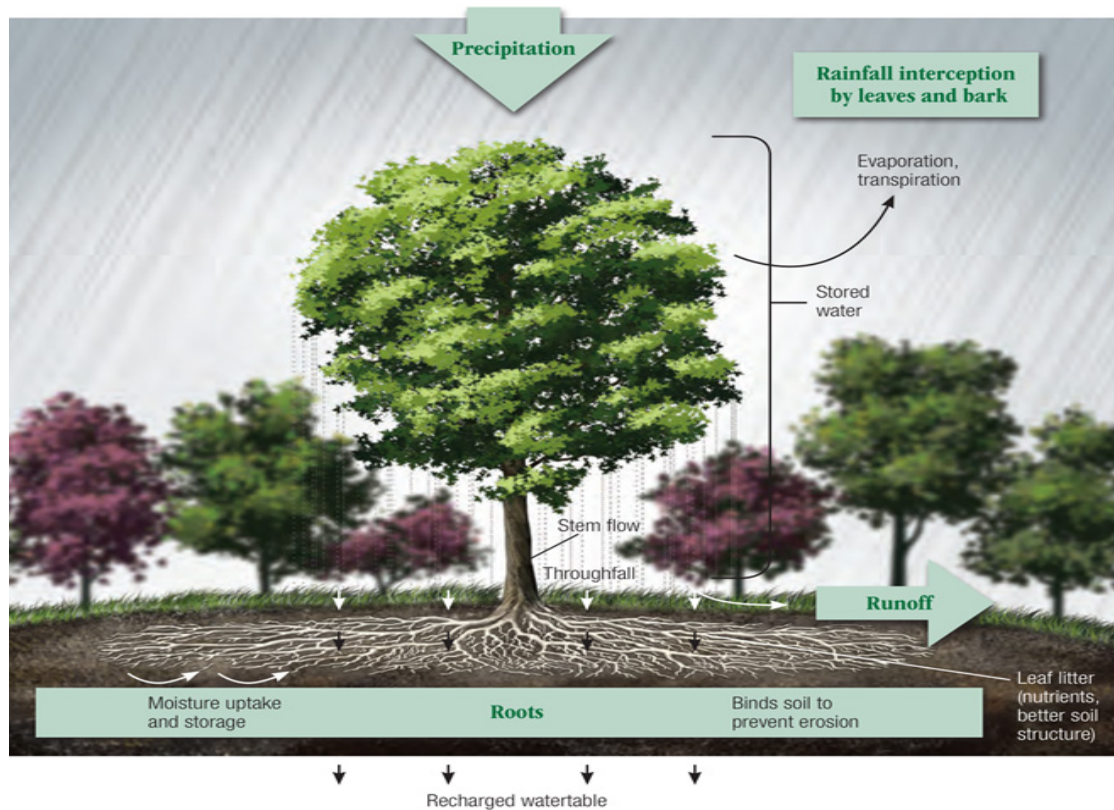
Value of trees

- Urban cooling in summer
- Urban warming in winter
- Moderates urban temperatures



Value of trees

- Rainwater interception



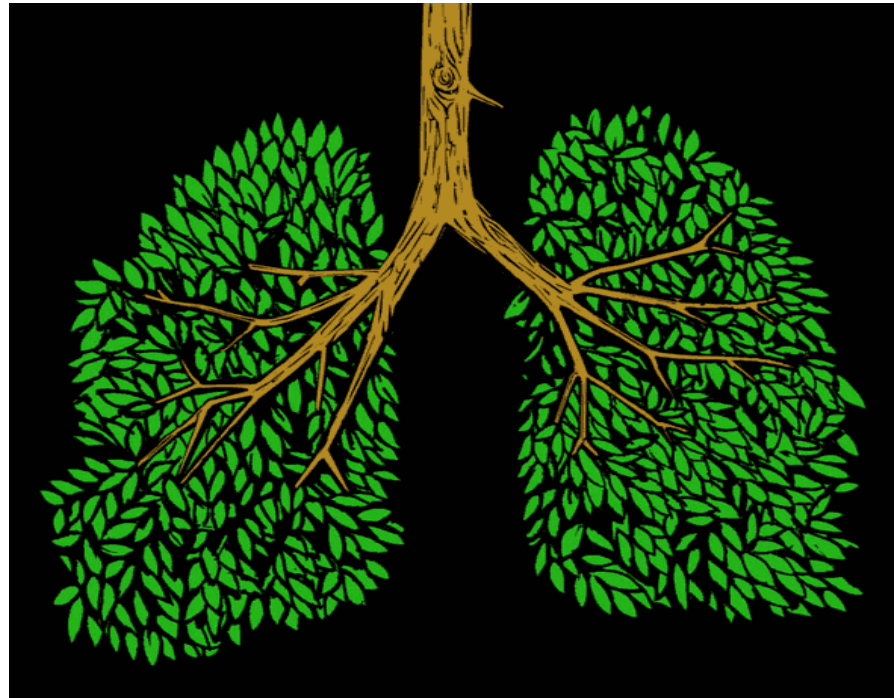
Value of trees

- Wildlife Habitat



Value of trees

- Oxygen
- Soil stabilisation
- Reduced erosion
- Moisture retention



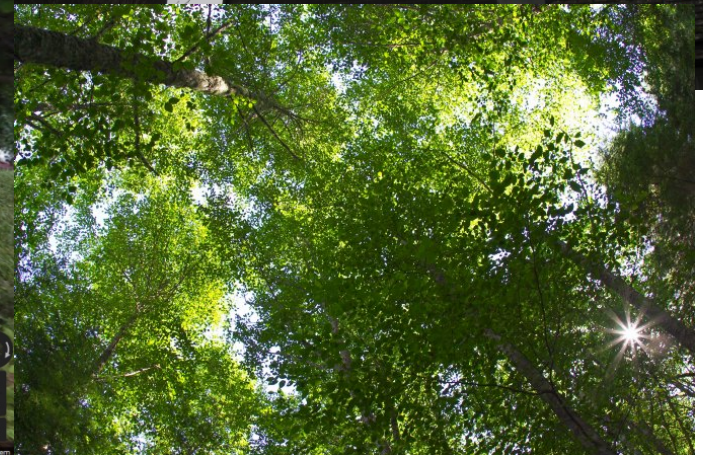
Dis-benefits of trees

- Infrastructure damage
- Failures
- Squirrels



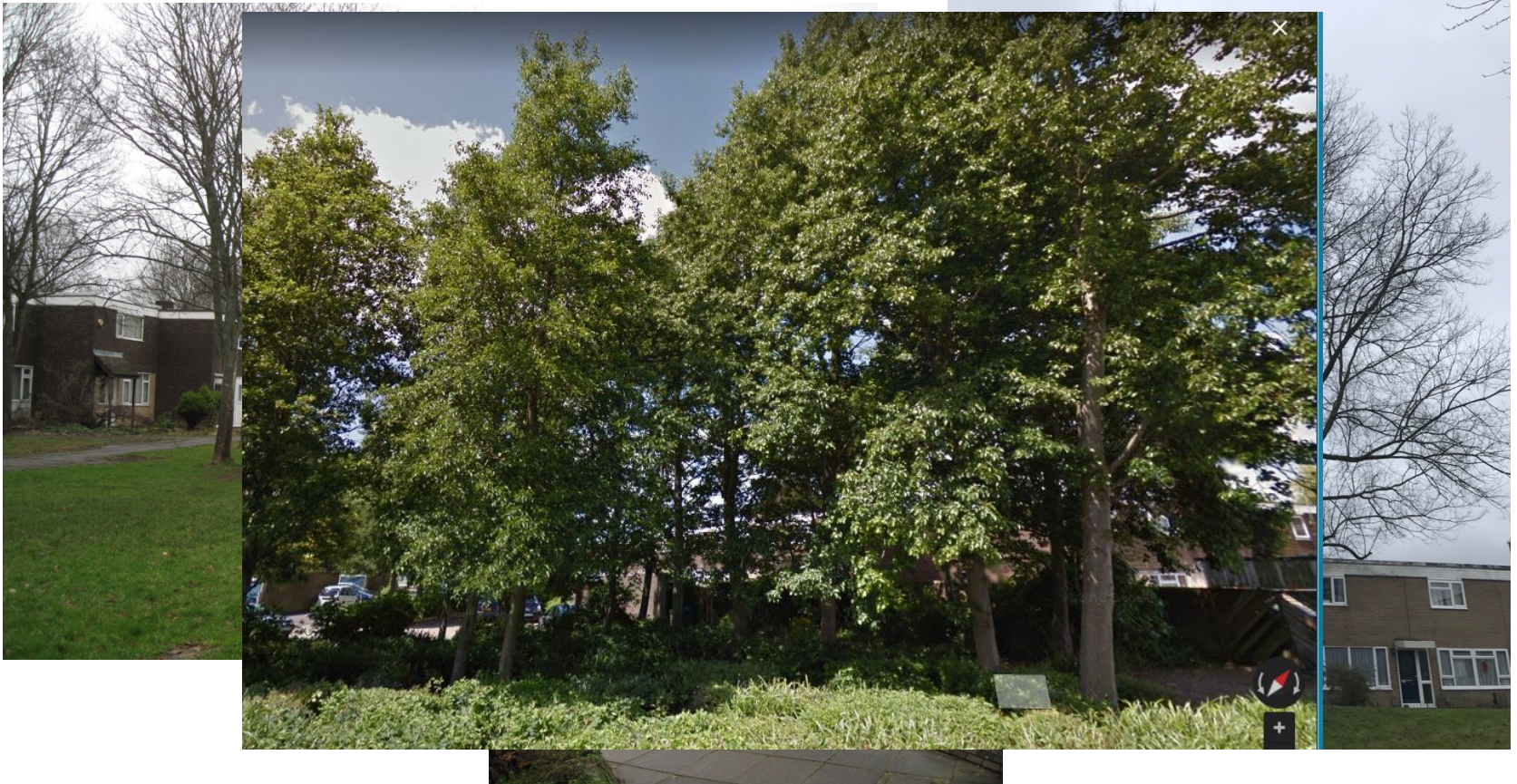
Dis-benefits of trees

- Relationship / proximity
- Oppressive
- Excessive shade



Historic tree planting

- Managing within policy framework/budget



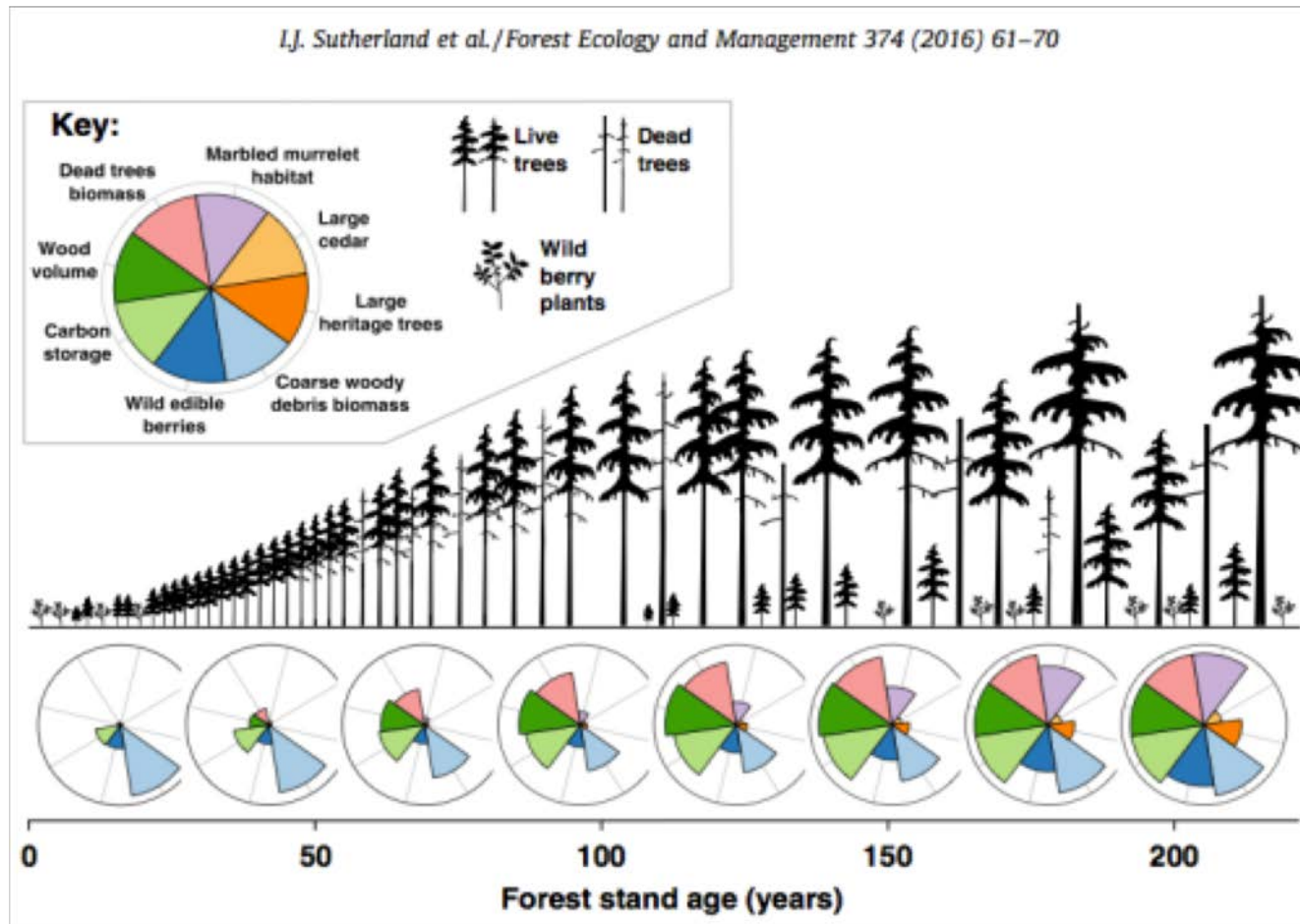
Historic tree planting

- Relationship / proximity



Tree planting

- Need to consider maturing tree population

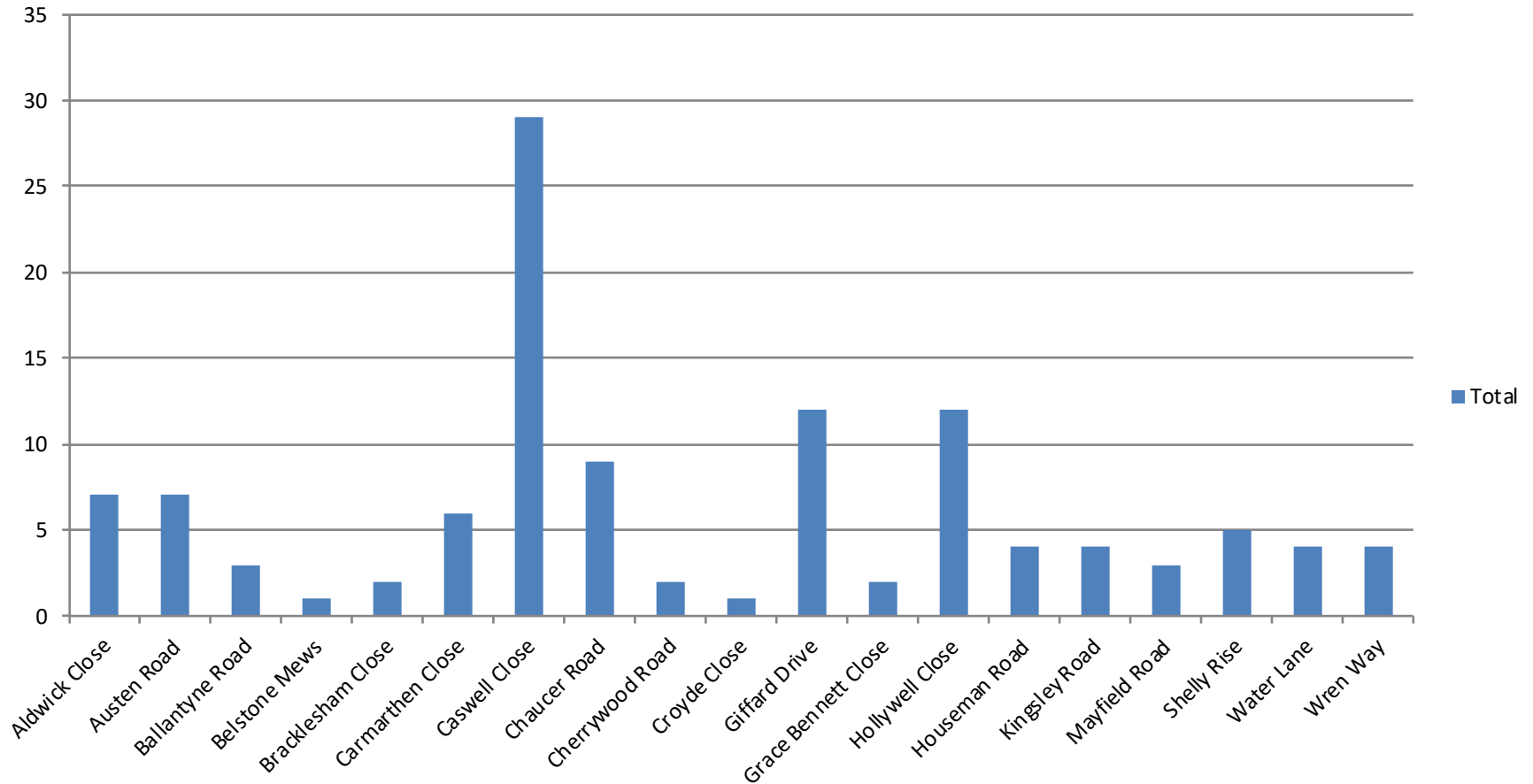


Customer contacts

- In the last 5 years there has been c117 tree related enquiries (c24 p.a. average)
- In the main these relate to concerns about
 - Proximity and size of tree (85%)
 - Concerned about tree/condition/failure (25%)
 - Debris/shade 21%
 - Damage 16%

Customer contacts

Total



Proposed action

- Desktop survey using 2017 aerial photography to identify high priority areas warranting on-site inspection



Proposed action

- Identify high priority trees for removal where relationship with built environment is unsustainable in the medium to long term
- Identify suitable locations for replacement planting and by use of “right tree-right place” ensure treescape for future generations

Planting

- Right tree




Proposed action

- Project plan

Activity	Pre	Year 1	2	3	4	5
Project scoping and secure funding source.	✓					
Ward member consultation and agreement to proceed.	✓					
Resident consultation - "What, Why & When"		✓				
Desktop survey to identify areas for inspection.		✓				
Inspection of trees to quantify and set priorities.		✓	✓			
Implementation of works for identified high priority trees.		✓	✓	✓		
Inspection of secondary priority trees (subject to budget).				✓	✓	
Implementation of the tree works identified on a prioritised basis (subject to budget).				✓	✓	
Assessment of available space for replacement tree planting and development of Planting Plan.			✓	✓	✓	
Tree planting.				✓	✓	✓
Ongoing review.		✓	✓	✓	✓	✓

Proposed action

- Costs



Costs Summary Table	£
1. Desktop survey (estimated 2 days)	1,000
2. Site survey (estimated 15 days)	6,000
3. Tree works (estimated at 100 removals)	34,000
4. Replacement tree planting (estimated at 60 trees)	12,000
Total Estimated Project Cost	53,000

Planned outcomes

- Relationship between trees and residents improved
- Less infrastructure damage.
- Replacement new “right tree - right place”
- Continuance of benefits of trees in the short, medium and long term

Legacy

- T
- th
- G
- n
- th



with
their
for

Legacy

- Treating the

with





21/12/2017 12:39